

Ordering Code: **CO-163A-X-Y-Z**

Control Option:
Maximum extension
from locating shoulder.
(Z:L Control shown)

4.0 Hex.

12.7 Hex. (1/2 inch)
Torque 9-10 Nm

Maximum Extension
from Locating Shoulder.

19.05 Hex.
(3/4 inch)

45

32

31

Locating
Shoulder

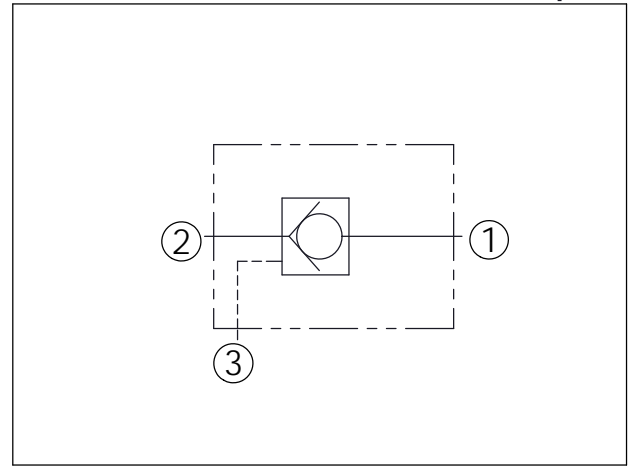
Pilot (3)

M16x1.5

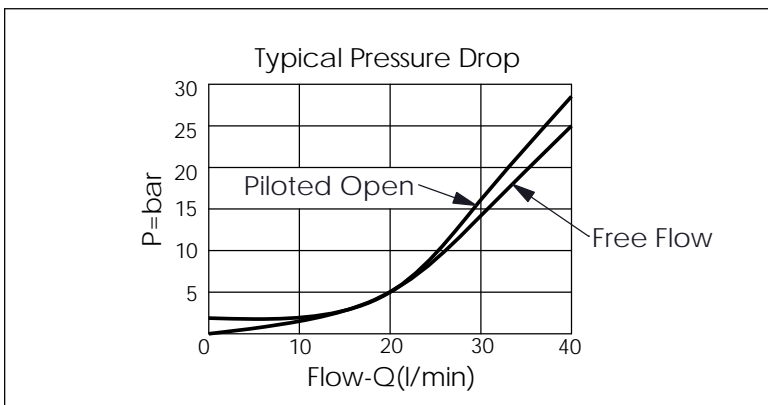
Valve (2)

Load (1)

UNIT:mm



TECHNICAL DATA		
Max. pressure:	350	bar
Rated flow:	30	l/min
Cavity-Tooling:	163A-3	
Installation torque:	27-33	Nm
Weight:	0.09 (Z:N) 0.10 (Z:L)	kg



X	OPERATION	
30	2 to 1 (Free Flow)	Pilot Ratio 3:1
3C	2 to 1 (Free Flow)	Sealed Pilot Piston Pilot Ratio 3:1

Y	SPRINGS	
	Cracking pressure	
20	2.0 bar	
35	3.5 bar	
50	5.0 bar	

Z	OPTION	
N	Non-adjustable	
NP	Non-adjustable With stainless steel external metal components (Buna-N Seal)	
L	Leakproof hex. socket screw.	